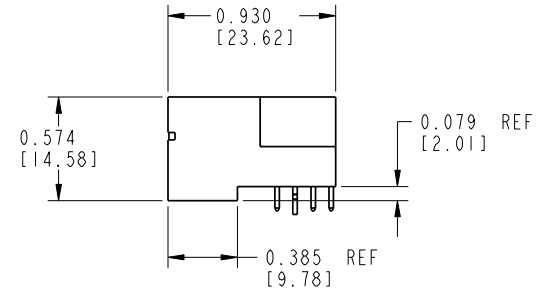
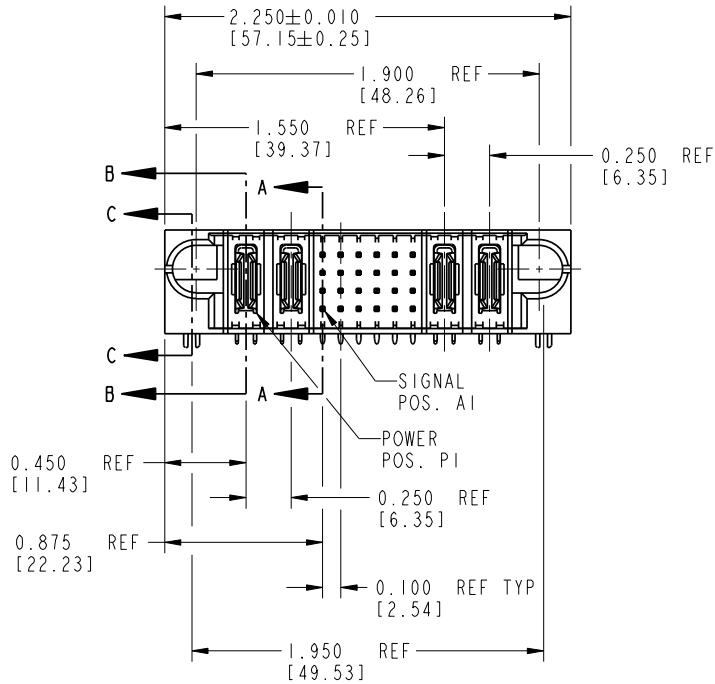
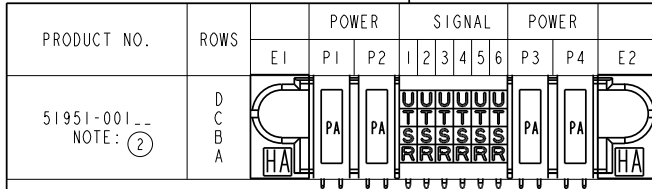


Tous droits strictement réservés. Reproduction ou communication à des tiers interdite sous quelque forme que ce soit sans autorisation écrite du propriétaire. Propriété de c FCI. Droits de reproduction FCI.

All rights strictly reserved. Reproduction or issue to third parties in any form without written authority from the proprietor. Property of FCI. Copyright FCI.



CODE	DIM "M" MATING LENGTH	CONTACT TYPE
R	0.270 [6.86]	SIGNAL
S	0.270 [6.86]	SIGNAL
T	0.270 [6.86]	SIGNAL
U	0.270 [6.86]	SIGNAL
PA	N/A [N/A]	POWER
HA	N/A [N/A]	HOLD-DOWN

mat'l code				SEE NOTES		tolerances unless otherwise specified		CUSTOMER	
lir	ecn no.	dr	date	linear	.XX±.01/0.X±0.3	projection	COPY		
A	V12169	JRW	9/18/01		.XXX±.005/0.XX±0.13		FCI www.fciconnect.com		
B	DG05-0192	SJ	06/24/05	angles	.XXX±.002/0.XXX±0.051		title 2P + 24S + 2P		
C	DG05-0472	Ryan	11/16/05		0°±2°		RIGHT ANGLE SOLDER HEADER		
				dr	J. WITMER 9/18/01	INCH/MM	product family	PwrBlade	code
				engr	J. ALLISON 9/18/01	scale	size	dwg no	213
				chr	J. ALLISON 9/18/01	1:1	51951-001		sheet
				appd	J. ALLISON 9/18/01				1 of 3
sheet index	revision	C	C						
	sheet	1	2						

CONFIDENTIAL



product family PwrBlade
code 213
sheet 1 of 3

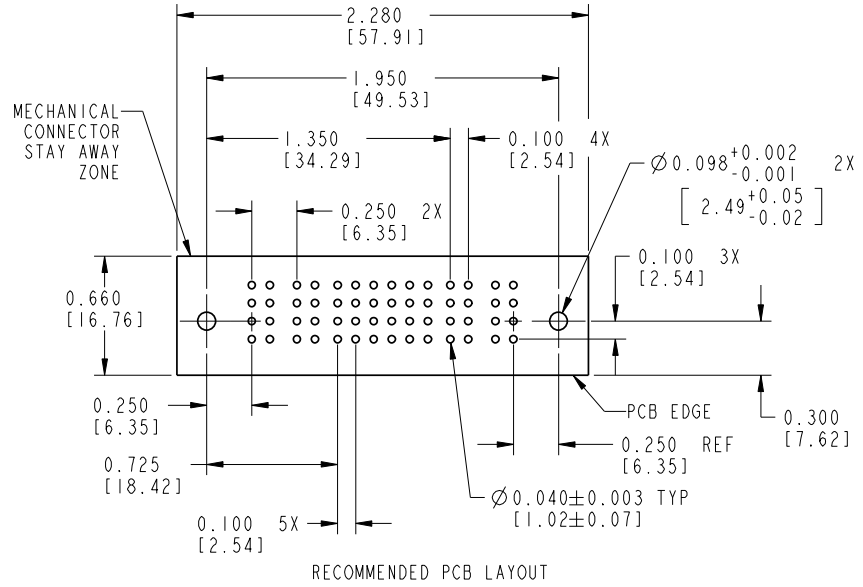
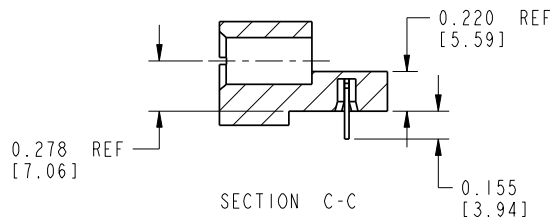
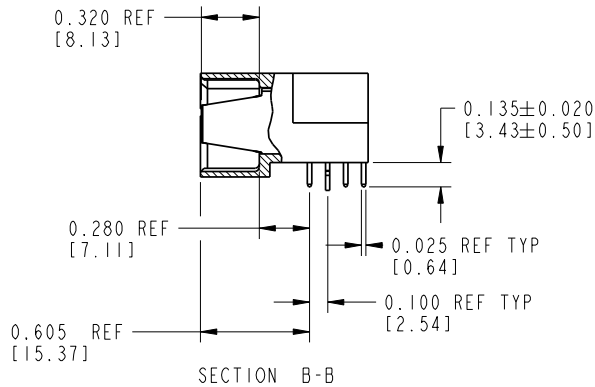
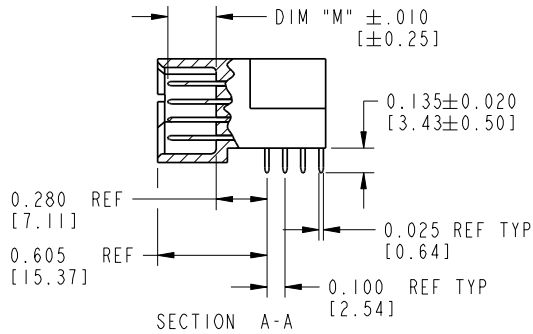
cage code 22526

Pro/E

Tous droits strictement réservés. Reproduction ou communication à des tiers interdite sous quelque forme que ce soit sans autorisation écrite du propriétaire. Propriété de c FCI. Droits de reproduction FCI.

All rights strictly reserved. Reproduction or issue to third parties in any form without written authority from the proprietor. Property of FCI. Copyright FCI.

PRODUCT NUMBER
51951-001--
NOTE: ②



CONFIDENTIAL

mat'l code				SEE NOTES	tolerances unless otherwise specified	CUSTOMER			
lfr	ecn no.	dr	date	linear	.XX±.01/0.X±0.3	COPY	www.fciconnect.com		
C				angles	.XXX±.005/0.XX±0.13	projection	title 2P + 24S + 2P		
				dr	.XXX±.002/0.XXX±0.051		RIGHT ANGLE SOLDER HEADER		
				enr	0°±2°	INCH/MM	product family	PwrBlade	code
				chr		scale	size	dwg no	213
				appd	J. WITMER 9/18/01	1:1	A	51951-001	sheet
sheet index	revision sheet				J. ALLISON 9/18/01				2 of 3
					J. ALLISON 9/18/01				

code code 22526

Pro/E

Tous droits strictement reserves. Reproduction ou communication a des tiers interdite sous quelque forme que ce soit sans autorisation écrite du propriétaire. Propriete de c FCI. Droits de reproduction FCI.

All rights strictly reserved. Reproduction or issue to third parties in any form without is not permitted without written authority from the proprietor. Property of FCI. Copyright FCI.

PRODUCT NUMBER
51951-001--
NOTE: ②

CONNECTOR NOTES:

- FOR ADDITIONAL INFORMATION, REFER TO DRAWING NUMBER 51951.
- PLATING:
51951-001: SIGNAL PIN: 30u"/0.76um Au OVER 50u"/1.27um Ni ON THE CONTACT AREA
AND 100u"/2.54um SnPb OVER 50u"/1.27um Ni ON THE TERMINATION AREA
POWER PIN: 30u"/0.76um Au OVER 50u"/1.27um Ni ON THE CONTACT AREA
AND 100u"/2.54um SnPb OVER 50u"/1.27um Ni ON THE TERMINATION AREA

51951-001LF: SIGNAL PIN: 30u"/0.76um Au OVER 50u"/1.27um Ni ON THE CONTACT AREA
AND 78u"/2.00um Sn OVER 50u"/1.27um Ni ON THE TERMINATION AREA
POWER PIN: 30u"/0.76um Au OVER 50u"/1.27um Ni ON THE CONTACT AREA
AND 78u"/2.00um Sn OVER 50u"/1.27um Ni ON THE TERMINATION AREA

PART NUMBER 51951-001LF MEETS EUROPEAN UNION DIRECTIVE AND OTHER COUNTRY REGULATIONS AS DESCRIBED IN GS-22-008.

THE HOUSING WILL WITHSTAND EXPOSURE TO 260° PEAK TEMPERATURE FOR 10 SECONDS IN A WAVE SOLDER APPLICATION WITH A CIRCUIT BOARD.

PCB NOTES:

- ALL DIMENSIONS ARE BASIC UNLESS OTHERWISE SPECIFIED.
- ALL THROUGH HOLES ARE LOCATED WITH A TRUE POSITION OF 0.004 [0.10]
- ALL HOLE DIAMETERS ARE FINISHED HOLE SIZE
- ∅0.098 [2.49] THROUGH HOLES ARE UNPLATED
- ∅0.0453±0.0010 [1.151±0.025] DRILLED HOLES PLATED WITH 0.0003 [0.007] MIN SnPb OVER 0.001 [0.03] TO 0.003 [0.08] Cu PLATING TO ACHIEVE A ∅0.040±.003 [1.02±0.07] HOLE]

CONFIDENTIAL

mat'l code				SEE NOTES		tolerances unless otherwise specified		CUSTOMER	
lir	ecr no.	dr	date	linear	.XX±.01/0.X±0.3	COPY		A FCI www.fciconnect.com	
C				projection	.XXX±.005/0.XX±0.13	projection		title 2P + 24S + 2P	
				angles	.XXX±.0005/0.XXX±0.013	INCH/MM		RIGHT ANGLE SOLDER HEADER	
				dr	0° ± 2°	scale		product family PwrBlade code	
				enrg	J. WITMER 9/18/01	1:1		size dwg no	
				chr	J. ALLISON 9/18/01			A 51951-001	
				appd	J. ALLISON 9/18/01			sheet 213	
sheet index		revision sheet						sheet 3 of 3	

cage code 22526

Pro/E